

Parent and Carer Information Evening

Monday 1st July 2024

Ms Aspinall
Headteacher



*To ensure that every child has a world class education: High quality curriculum;
excellent standards of behaviour and a positive learning environment so that every
child can reach their potential.*

The Greenbank story so far....

- Visits to Primary Schools by Mrs Collins (Head of Year 7) & Mrs Howe (SENDCo)
- Transition emails
- Year 6 induction Day – Thursday 27th June
- New Intake Evening – Monday 1st July
- Year 6 Summer School – 100+ pupils attending!
- Transition website page
- Arbor App

The screenshot shows the Greenbank website's transition page. At the top, there is a navigation bar with links for Home, Key Information, Parents, Students, Governors and Trustees, Policies, Curriculum, Calendar, Jobs, Staff CPD, and Contact Us. The main content area features the Greenbank logo and a 'Welcome to Greenbank' heading. Below this, there are several paragraphs of text explaining the school's commitment to a smooth transition for Year 6 pupils and their parents. A sidebar on the right contains several key links and promotional banners. The 'Welcome to Greenbank' sidebar includes links for 'Year 6 Transition Information Booklet', 'This is me - Year 6 Transition Booklet', 'School Uniform - Lockdown', and 'Year 6 Transition - FAQs'. A prominent banner asks visitors to click a link to see a video about the transition process for Year 7 students. Below this, there are two video thumbnails: 'WELCOME TO GREENBANK Y...' and 'GHS Virtual Open Day...'. The right sidebar also features banners for downloading the 'Firefly for Parents' app, 'Parentmail' app, and 'The School Day' timetable, which lists various school events and their times.

Home - Key Information - Parents - Students - Governors and Trustees - Policies - Curriculum - Calendar - Jobs - Staff CPD - Contact Us

Welcome to Greenbank

Greetings and a warm welcome to Year 6 pupils, parents and carers. Here at Greenbank we make every effort to ensure our new pupils have a smooth transition into secondary school. We have already received your Greenbank admission forms and probably spoken with your Year 6s to support your move. Normally prior to joining, we arrange a number of information, taster, and transition events for Year 6 pupils and their parents or carers, such as a parents' information meeting, Transition class, and Summer School.

Due to the current global situation, and because we have had to adapt our normal transition procedures to ensure that we can do this and still be able to offer advice, information and support. The new procedures are likely to include video-conference meetings at the end of June with us on our online platform, Google Meet, in order for us to gradually get to know each other and set term groups before September. We will hope to run our successful Summer School in a safe format.

From the next few weeks we will be sending information on life here at Greenbank and how to prepare for Year 7.

Welcome to Greenbank

- Year 6 Transition Information Booklet
- This is me - Year 6 Transition Booklet
- School Uniform - Lockdown
- Year 6 Transition - FAQs

Please click here to see a **video** about the transition process for one of our current Year 7 students. Click on almost anything inside to get links to all things Greenbank.

Please click the link below to see Year 7 Lesson 1 - What is Geography?

<https://www.youtube.com/watch?v=U3B48uPVAUo>

WELCOME TO GREENBANK Y...

GHS Virtual Open Day...

Download Firefly for Parents

Click below to download the Firefly for Parents app

Download on the App Store

GET IT ON Google play

Download Parentmail

Click below to download the Parentmail app

Download on the App Store

GET IT ON Google play

The School Day

Breakfast Club: 8:15 - 9:25
Personal Development Time: 9:45 - 10:00

Period 1: 10:10 - 10:50
Period 2: 10:55 - 11:40
Period 3: 11:45 - 12:30
Lunch: 12:35 - 1:00
Period 4: 1:05 - 1:50
Period 5: 1:55 - 2:40

Tuesday 3rd September

- ✓ Year 7 arrive at 8.30am and will be the only year group fully in school that day
- ✓ Full school uniform
- ✓ Equipment
- ✓ Further time with form tutor
- ✓ Student Planner
- ✓ Early lunchtime
- ✓ Early bedtime
- ✓ School day ends at 2.30pm – Form Tutors, HOY and Senior Staff available



The important people in your child's school life

Head of Year 7 – Mrs Collins-Murphy



Form Tutors

- 7A - Audrey Hepburn – Mrs Campbell/Mrs Minshull
- 7B - Emily Bronte – Mrs Palmer
- 7C - Marie Curie – Mrs Lynch
- 7H - Christiana Hartley – Mr Meakin
- 7K - Helen Keller – Mr Melia
- 7P - Emmeline Pankhurst – Mr Plunkett
- 7S - Mary Seacole – Mrs Turrell

Senior Leadership Team

Ms Hinde: Deputy Headteacher

Miss Cullen MBE: Assistant Headteacher – Achievement, Assessment & PP

Mrs Gent-Jones: Assistant Headteacher – Pastoral & Safeguarding

Mr Pritchard: Assistant Headteacher – Timetable, Attendance & Pers Dev

Mrs Whittaker: Assistant Headteacher – Teaching and Learning & ICT

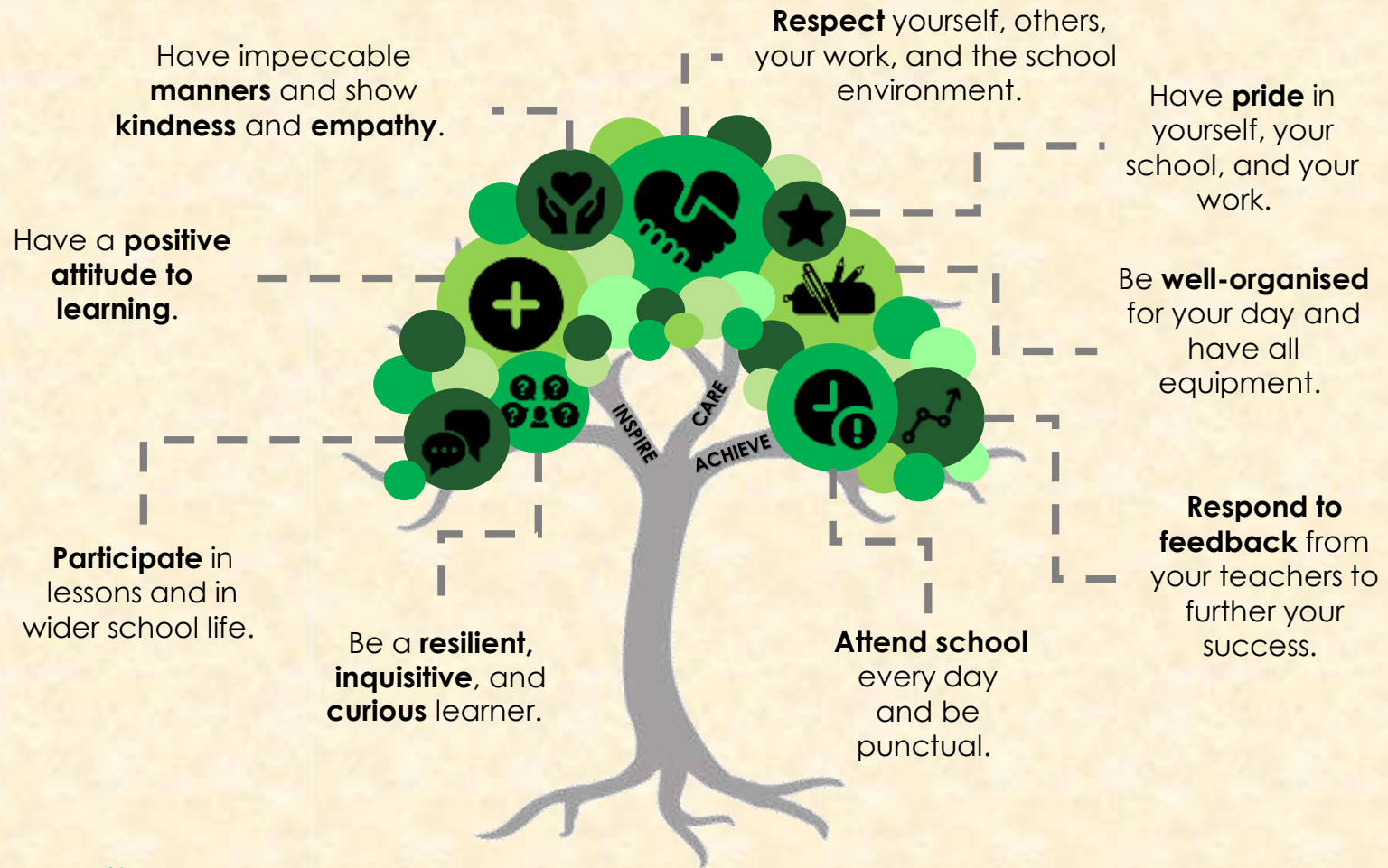
SENDCO: Mrs Howe

Young Carers: Mrs Counce

ANGELS: Y10 pupils

INSPIRE CARE ACHIEVE

To ensure that every child has a world class education: High quality curriculum; excellent standards of behaviour and a positive learning environment so that every child can reach their potential.



The Greenbank Way





The Greenbank Way

INSPIRE



Have a positive attitude to learning.



Participate in lessons and in wider school life.



Be a resilient, inquisitive, and curious learner.

CARE



Respect yourself, others, your work, and the school environment.



Have impeccable manners and show kindness and empathy.



Have pride in yourself, your school, and your work.

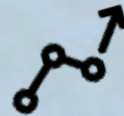
ACHIEVE



Attend school every day and be punctual.



Be well-organised for your day and have all equipment.



Respond to feedback from your teachers to further your success.



Uniform for a professional learning environment

Equipment for Learning

All students must have the following equipment to be successful learners:

- ✓ Student Planner (available on **Tuesday 2nd September**)
- ✓ Pencil case
- ✓ Two black or blue pens
- ✓ A green pen for Improvement Time
- ✓ Pencil
- ✓ Ruler
- ✓ Eraser
- ✓ Sharpener
- ✓ Calculator & geometry set
- ✓ Ear/headphones for Computing
- ✓ Apron for Design Technology

Rewards



CRITERIA FOR AWARDING REWARD HOUSE POINTS



Blazer badges will be awarded for achieving high standards.
Bronze = 50 points
Silver = 100 points
Gold = 150 points
Green = 250 points

Category	Activity	Number of points	Who awards points?
<u>Service to school and community</u>	Open evening	2 points	Mr Raikes
	Charity event 'Going the extra mile'	2 points	Mr Raikes
	Kindness	2 points	Individual staff
<u>Extra-Curricular</u>	Attendance at an after school or lunch time activity/club.	1 point per session	Individual staff Lists to Mr Raikes (Every half term)
	Impeccable behaviour, attitude, uniform and homework	5 points weekly	Mrs Gent-Jones
<u>Following 'The Greenbank Way' every week</u>	Teaching staff will award pupils achieving an Attitude To Learning (ATL) of 4 in their work a House Point.	1 point for every ATL of 4	Teacher to award
	Teaching staff can also award points at their discretion for progress and effort.	1 point	Teacher to award

The number of points a pupil achieves will be recorded on their Pupil Individual Progress sheets (PIPs) termly and their final report. Form Tutors will regularly inform pupils of their current total. House Leaders will celebrate the success of individual pupils in House Assemblies.

Points for Leadership will be awarded in accordance with the criteria set out in the Leadership Programme.

Article 29 – Greenbank High School must develop every child's personality, talents and abilities to the full.



Achievement Points

- Bronze badge – 100 achievement points
- Silver badge – 150 achievement points
- Gold badge – 200 achievement points
- Green badge – 250 achievement points



Rewards

Pupils are rewarded for excellence according to their attitude to learning, organisation and participation in school life. This can include:



Verbal praise from staff



Positive written feedback



Postcards home



Displays and Golden Work



Blazer badges



Praise letter from the headteacher



Awards evenings



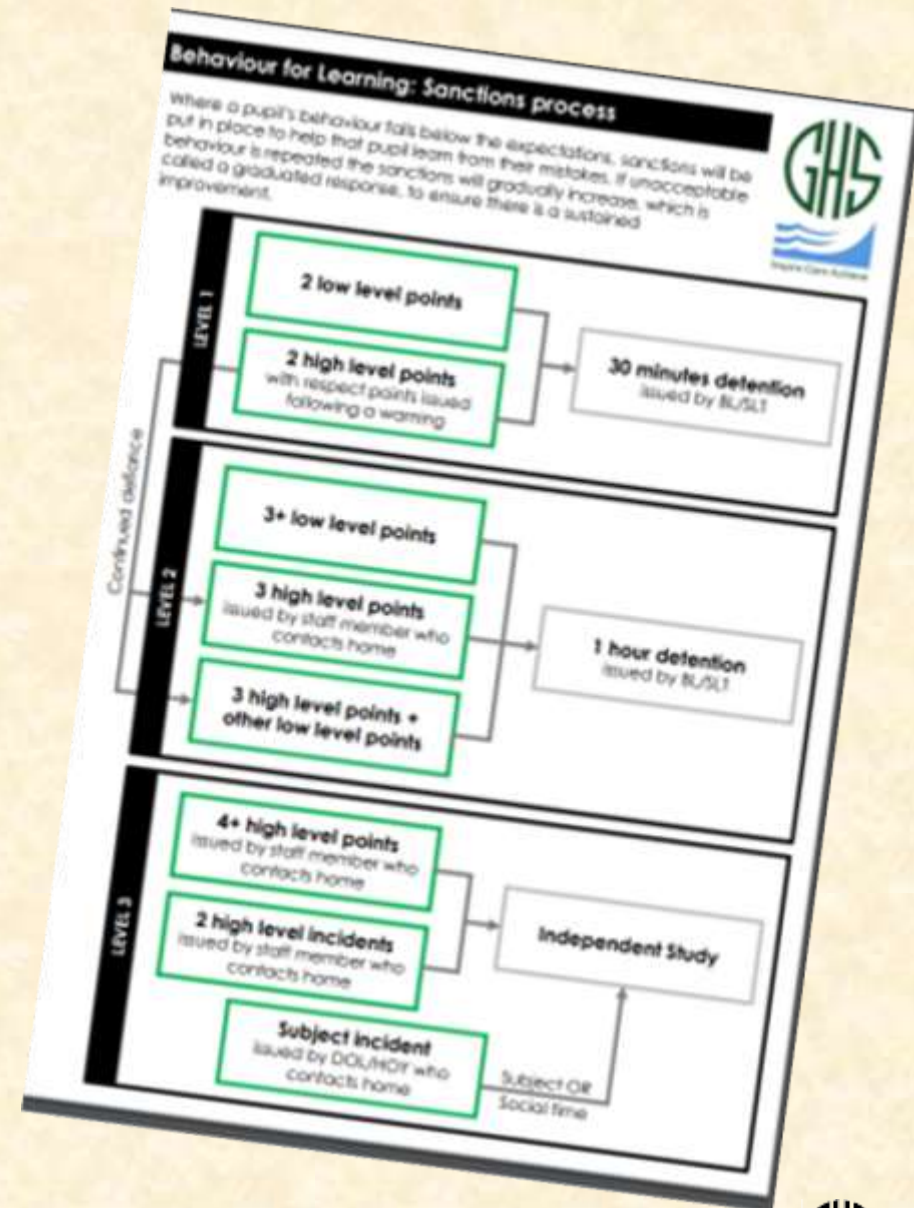
5 points for no sanctions



Invitation to the headteacher's breakfast



Text messages home

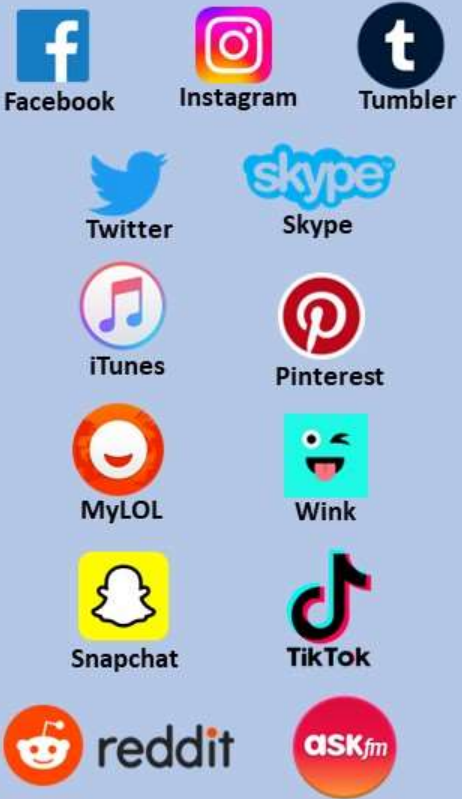


Social Media Age Restrictions

Under 13
(with parental consent)



13 +

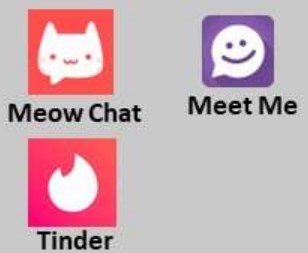


16+



17+

18+



18





A 'can do' attitude and resilience achieves excellence

Attendance matters

- Social and emotional growth
- Academic performance
- Learning opportunities
- Personal responsibility and time management



**Information and guidance
Assessment, Recording and Reporting
Year 7 -2024-25**

**Miss Cullen MBE
Assistant Headteacher**

Assessment

Formative assessment - regular assessment for learning in lessons:

High expectation for all pupils

- Written and verbal feedback that allows all students to achieve their full potential
- Pupil response to feedback

Summative assessment - Termly assessment

- Pupil Individual Progress Report
- Form tutor report in Summer term

Year 7 Assessment - Thresholds

	Current Year 7	
AVERAGE KS2 Prior attainment/scaled scores	BAND	GCSE TARGET
More able	Platinum	8-9 (A*)
High ability	Gold	7 (A)
Middle ability	Silver	6 (B)
Middle/Low ability	Bronze	4-5 (C)
Foundation	Foundation	1 – 3 (D-G)

Attainment and progress

Band	Cells and Tissues	Animal Reproduction	Plant reproduction	Environment and adaptation	Variation and classification
	Topic 1	Topic 2	Topic 3B	Topic 3	Topic 4
Platinum	Produce clear drawings of cells viewed under the microscope showing a representation of scale. Demonstrate a thorough understanding of cell structure and function for a variety of different cells.	Suggest reasons for infertility explaining how this has led to difficulties for couples to have a baby. Evaluate the different methods of infertility treatment.	Evaluate the different mechanisms underpinning seed dispersal and explain which methods seeds take.	Explain the interdependence of living organisms. Consider the impact of	Evaluate the advantages and disadvantages of genetic engineering.
Gold	Prepare microscope slides and view them at different magnifications. Explain the function of the main parts of animal and plant cells. Explain how different cells are specialised.	Describe the changes that occur from fertilisation to birth of a baby. Explain why a mother's maternal lifestyle may have an effect on the development of her baby. Describe and explain the changes that occur in the menstrual cycle.	Describe and explain the structural differences between wind and insect pollinated flowers. Identify different types of seeds and fruits and suggest how pollination has been achieved.	Draw and interpret pyramids of numbers. Explain factors that affect population size. Use a quadrat to estimate plant populations. Explain the impact of modern food production techniques on the environment.	Collect and graphically interpret data for examples of continuous variation. Give examples of invertebrate and plant groups and explain differences between them. Establish what selective breeding is and describe how this may be achieved. Explain what an inherited disease is.
Silver	Prepare microscope slides and view them under a microscope. Draw, label and compare animal and plant cells.	Describe the process of sexual intercourse and fertilisation.	Identify and describe the main structures in a flower and describe how fertilisation occurs.	Interpret food chains and webs. Describe resources that organisms may compete for.	Describe what causes environmental variation. Collect and graphically represent
Bronze	Use a microscope to observe prepared slides. Label main parts of animal and plant cells.	Recall the main organs of the male and female reproductive systems.	State the basic functions of flowers and seeds.	Name the main resources that plants and animals need to survive.	Give examples of genetic and environmental variation in humans.

Above expected progress

Expected progress

Working towards expected progress



A mock Pupil Individual Progress Report PIP

Report date
15 Jul 2022

Course	Teacher	Band	Current Assessment Summer Term	Progress	Behaviour	Effort	Homework	Organisation
Art	Mrs V...	Silver	Silver +	Expected	4	4	4	4
Computer Science	Miss L... Mr P Palm	Silver	Silver	Expected	4	4	3	3
Design Tech	Ms C Parry Mrs A Woods	Silver	Gold	Above	4	4	4	4
Drama	Miss D Bloom	Gold	Platinum -	Above	4	4		
English	Mrs C West Ms L O'Hara	Silver	Silver	Expected	3	3	3	3
French	Miss L Griffiths	Silver	Gold -	Above	3	4	4	4
Geography	Miss K Peppin	Silver	Gold +	Above	3	4	4	4
History	Mr S Bentzen	Silver	Platinum -	Above	4	4	4	4
Mathematics	Miss R Wilson	Silver	Silver	Expected	4	4	4	4
Music	Mrs P Palmer	Silver	Silver	Expected	4	3	4	4
PE	Miss C Cullen	Gold	Gold	Expected	4	4		4
RE	Mrs H Clarke	Silver	Silver +	Expected	3	4	3	4
Science	Mrs C Pritchard Mrs D Alherton Mrs K Blease	Silver	Silver +	Expected	4	4	4	4
Spanish	Ms A Delaney Miss L Griffiths	Silver	Gold -	Above	3	4	4	4

Summer Term – Detailed Form Tutor report

Recording and Reporting

- Pupil Individual Progress (PIP) reports will be completed termly
- Parents' and Carers Evenings for Year 7 – Thursday 28 November
- Form Tutor review day - TBC

Reporting to Parents/Carers	Dates
Parents' and Carers Evening	Thursday 28 November
PIP 1	w/c 9 December
PIP 2	w/c 24 March
PIP 3 and report home	w/c 14 July

Parents' and Carers Evening

- School cloud system to book appointments-online
- <https://greenbank.schoolcloud.co.uk>
- Email will be sent with instructions in November on how to access the system to book appointments
- Please ensure we have an up-to-date email address

Get involved and meeting new friends



Greenbank Life – join at least one club

Athletics	Gym Club	Debating Club
STEM Club	Club Cultura	Choir – Greenbank Voices
Hockey	Film Club	Tennis
Orchestra	Netball	Coding Club
Yr 7 Lets Get Cooking Club	Aerobics/Fitness Room	Cross-Country
Yr 7 Dance Club	Badminton	Philosophy 4 Children
Rounders	Games Club	Football
Yr 7 Visit to Boulogne /London	Visits to France or Spain	Year 9 Law Club
Year 7 Maths Club	Interact Club (Rotary)	Creative Writing Club
Strings Group	Wind Band	Orchestra
Samba Band	Jazz Club	Music Theory Club
Spanish Exchange	Ukelele Group	Engineering Club
Duke of Edinburgh Award Scheme	Year 7 Drama Club	Enterprise Competitions
School Concerts and Productions		

Music in Year 7

Learning to play a musical instrument at Greenbank High School.

BAND PROJECT

Every Year 7 student will be provided with a **Brass** or **Woodwind** instrument to **play in class** and **practise on at home**.

INSTRUMENTAL LESSONS

If you have already made a start learning to play an orchestral melody instrument, we encourage you to **continue with instrumental lessons** at Greenbank High School as you will improve your skills quicker.

Please see Mrs Palmer (Head of Music) should you have any questions about **BAND PROJECT** or **INSTRUMENTAL LESSONS**.



Parent and Carer wider school support opportunities

- Parent Governor Vacancy
- Greenbank PTA



Year 7
Books



Lockers



Reward
Badges



Outside seating



Art Bytes Competition



Science Equipment

DfE School Rebuilding Programme

- **Phase 1** – Provide temporary accommodation on existing playing field location – 4 months
- **Phase 2** – Demolish Partial – 6 months
- **Phase 3** – Build new 3 storey building – 18 months
- **Phase 4** – Demolish all existing buildings and provide new soft and hard landscape areas – 6 months



Working Together

- Your child needs you to work with us more than ever
- Talk about the school day, friendships, classwork and homework
- High attendance leads to high achievement
- Look at the Student Planner together and sign it weekly
- Encourage and enable her to participate in extra – curricular activities
- Register with ParentPay and check school website and social media
- Attend events: Parents' Evening, meeting your child's Form Tutor
- Keep in touch
- Join the PTA



Key Dates

- Tuesday 3rd September 2024 - Start of term. Collect your child from school (Sports Hall) at 2.30pm
- Year 7 Parents' Evening (online) – Thursday 28th November 2024

Key Information – School Website

- **Arbor App** - wealth of information
- **ParentPay** account – purchasing food, paying for trips
- Home school agreement
- Acceptable ICT Use agreement
- Buses – cash or travel card
- Free school meals

To all the staff at Greenbank,

Thank you all so much for everything. Your support, great teaching skills and kindness has taught me so much and helped me build my confidence and so much more. I will truly miss Greenbank and the people there.

Thank you so much for everything, I couldn't have picked a better school. I wish everyone the best for the future, there is no school like Greenbank, so keep going and work your magic.

Thanks again, Sierra





Greenbank High School

AN INTRODUCTION TO THE SEND DEPARTMENT



Inspire Care Achieve

GREENBANK HIGH SEND DEPARTMENT

- **Staff Skill Set:**
- **Qualified SENDCO**
- **Deputy Safeguarding Lead**
- **Level 7 Assessor**
- **Primary Education specialist.**
- **D of E Leader**
- **Vocational teacher**
- **Counsellor.**
- **Linguist**
- **Neurodiverse trained**
- **Entry Level and Functional skills teacher**

Greenbank High School SEND Organisational Chart



Inspire Care Achieve



SEND ON A NATIONAL LEVEL

Headline facts and figures - 2023/24

New Government Data

EHC plans

434,354

pupils in schools in England. Up by 11.6% from 2023

[▶ What is this?](#)

EHC plans

4.8%

percent of pupils with an EHC plan. Up from 4.3% in 2023

[▶ What is this?](#)

SEN support/SEN without an EHC plan

1,238,851

pupils in schools in England. Up by 4.7% from 2023

[▶ What is this?](#)

SEN support/SEN without EHC plan

13.6%

percent of pupils with SEN support. Up from 13.0% in 2023

[▶ What is this?](#)

Over 1.6 million pupils in England have special educational needs (SEN)

An increase of 101,000 from 2023. This includes the number of pupils with an education, health and care (EHC) plan and the number of pupils with SEN support, both of which continue a trend of increases since 2016.

- The percentage of pupils with an EHC plan has increased to 4.8%, from 4.3% in 2023.
- The percentage of pupils with SEN (SEN support) but no EHC plan has increased to 13.6%, from 13.0% in 2023.

Greenbank SEND Profile 2023 -2024.

- **OFSTED Report 2022**

- "Leaders have prioritised support for pupils with SEND. The needs of pupils with SEND are identified quickly and accurately. Leaders have ensured that teachers receive high-quality information about the needs of this group of pupils. This ensures that teachers use effective strategies to best support pupils with SEND during lessons. Pupils with SEND, and disadvantaged pupils, achieve well."

National baseline statistics

Use the two graphs below to compare the percentage of SEN stages and SEN needs in your school to your county and national average.

SEN Stages SEN Needs

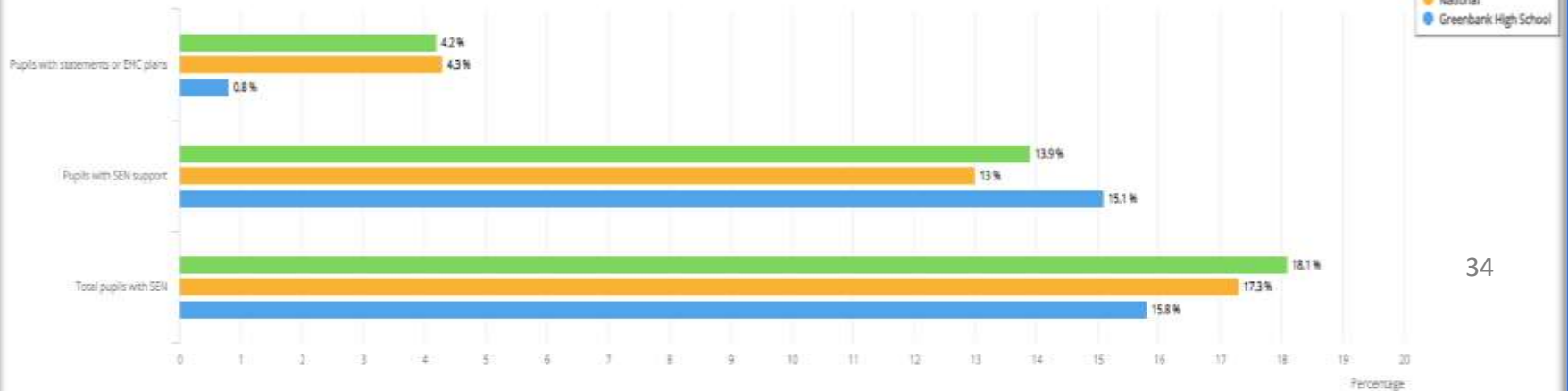
All schools

Print

Choose LA

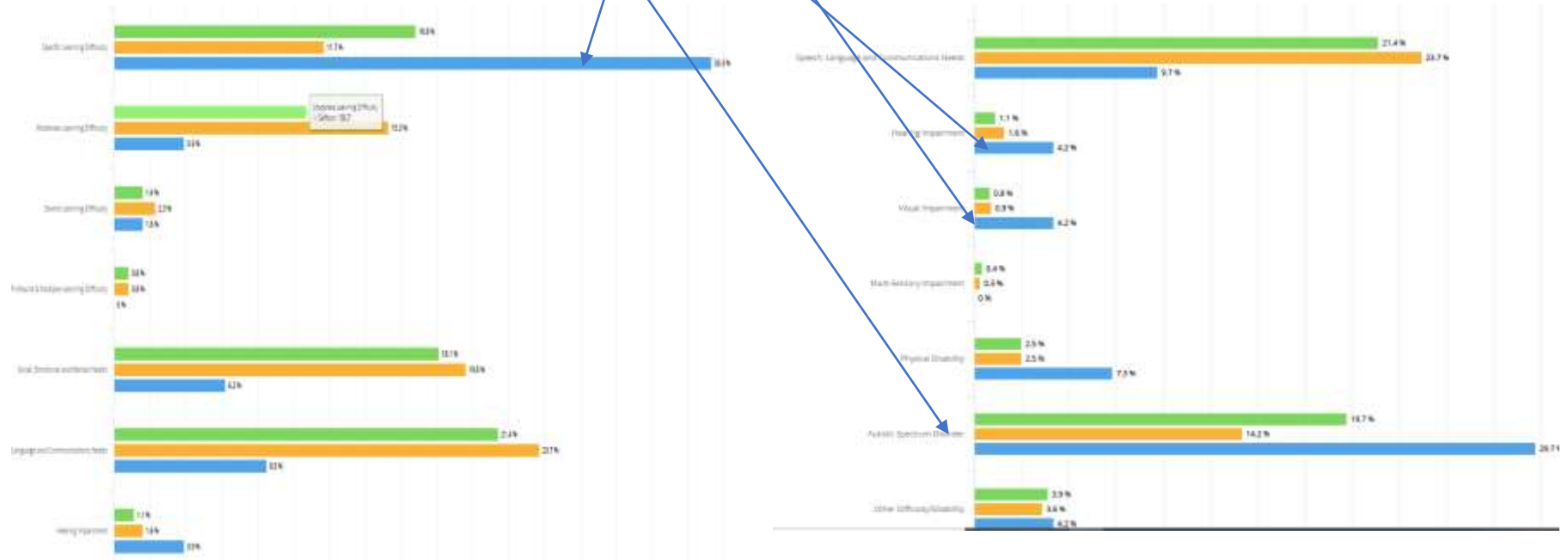
Configure SEN stages/needs

SEN stages



SEND AREAS OF NEED

ASD, SPLD, VI & HI Are the largest areas of need.



Breakdown of SEND Data:

Year Group	Number of SEND Students Sept 2023	Number of Students with an EHCP Sept 21	Number of Students to be put forward for EHCP	TOTAL 164
YEAR 7	32 35	1	3 applications at panel	32 35
YEAR 8	29 31	1	2 applications in process	29 31
YEAR 9	29 31	3	1 in process	29 31
YEAR 10	34	2	1 in process	34
YEAR 11	33	5	1 in process	33

YEAR Group	No. PP	LAC
7	11/39	1
8	10/44	1
9	9/46	2
10	12/38	1
11		
TOTAL		

Area of Need	Total	Y7	Y8	Y9	Y10	Y11
SPLD		9	11	7	10	12
ASD		14	10	10	9	8

14 EHCPS Applied for this year.
9 successful
5 Rejections

USED IN STUDENT SUPPORT PLANS

COGNITION & LEARNING

- SPLD- Specific Learning difficulties e.g. Dyslexia
- MLD- Moderate Learning Difficulty.
- SLD- Severe Learning Difficulty
- PMLD- Profound and multiple learning difficulties.

COMMUNICATION & INTERACTION

- ASD
- SLCN Speech & language and communication
- DLD Developmental Language disorder

4 AREAS OF NEED

PHYSICAL & SENSORY

- VI- Vision Impaired
- HI- Hearing Impaired
- MSI- Multi Sensory Impaired
- PD- Physical Disability

SOCIAL EMOTIONAL & MENTAL HEALTH

- ADD
- ADHD
- Eating disorders
- Anxiety/Depression.
- Self Harm.
- Substance misuse

Student SEN Information

Cognition & Learning

Barriers to Learning:	How best to support me:
I find it difficult to concentrate for long periods of time.	Please chunk work for me and allow me to use my managed move card.
I have difficulty processing large amounts of information and will get easily overwhelmed.	Please give me simple verbal directions and use a task management board with me where possible.

Communication & Interaction

Barriers to Learning:	How best to support me:
I am very impulsive and am prone to shouting out	Please try and give me different opportunities to have my voice heard. Allow me to write answers down and avoid overly reprimanding me where possible.
I sometimes have difficulties with my friendships and this will have a negative impact on my day.	Please help me to resolve any difficulties and scaffold any such conversations with my peers.

Main areas of need as defined in the Code of Practice.
Please indicate the area(s) which you consider to be acting as barriers to progress. Where a child/young person has needs in more than one area – you must identify the primary need with the number 1. You may then rank the other areas if appropriate.

Area	Rank	Area	Rank
Communication & Interaction	2	Cognition & Learning	1
Social Emotional & Mental Health Difficulties	1	Sensory &/or Physical Needs	3

Referred to in EHCPs and school support plans.

Support Available for SEND pupils

Cognition and Learning

- Individual Pupil Profile and Support Plan for pupils
- Literacy/Numeracy Interventions.
- Case work with Educational Psychologist
- EAL Support
- Reading Interventions.
- Cpens/Laptops
- Catch up Literacy
- TA support
- Adapted Curriculum.
- Alternative Curriculum.



Physical and Sensory

- Bespoke ground floor timetables
- Wheelchair access
- Adaptive technology - AV Tutor
- The POD area- Low Sensory Area.
- Use of subtitles and live speakers
- Hearing Loop system / Radio aids.
- Bespoke visual timetables



Support Available for SEND pupils

Social Emotional-Well-being

- Robust Pastoral System
- Team of Mentors
- ANGELS- Older Pupil mentors
- Young Carers Group.
- In school Counselling.
- MHST Prog.
- Extensive extra-curricular activity program.
- Working alongside outside agencies- EFC/LFC/ Sefton Safe space
- Safe Space Area - R6
- The ACER CENTRE



Social Communication

- Social communication groups
- OSSME Support
- SALT Interventions/ Assessment
- Friendship Groups
- Access to outside agencies- Autism initiatives.
- The POD - Low sensory area.
- Use of a Neurodiverse mentor

Greenbank High- SEND Provision Map



WAVE
3 Provision

EHCP application	Referral to Complimentary Education	Adapted Curriculum	Adapted timetable
High Needs Funding	Counselling-in house.	Referral to TAS/Use of EHATS	ACER CENTRE



WAVE
2 Provision

SENISS Support	Outside Agencies	EAL-LIMAS Support	Catch up Literacy	Academic Mentoring
Neuro diverse mentoring	Ed Psych involvement	TA Support		Differentiated curriculum
KS4 College trips/CV advice	1:1 Career S	Social Communication Groups		1:1 Reading intervention



WAVE
1 Provision

Our Universal Offer				
High Quality First Teaching	Intervention groups-PDT	Angels-Pupil Mentors	Access to Room 6	CATS /ART test for Y7 Pupils
Paired reading-Literacy Leaders	Using data to inform the Assess ,Plan, Do, Review process (APDR)	CPENS/Coloured paper/overlays	Access Arrangements	Laptops/writing slopes
Time out Card	Use of the Learning Zone	Literacy Leaders/ Paired Reading	Early Exit pass	Use of Room 6 at break and lunch



SEND SUPPORT PLANS



(PET) SEN Student Support Plan

Stage: K

Date of birth: 12/10/2011 Gender: Female Tutor group: Pankhurst Year group: Year 7 House: Pankhurst

Teacher: Mrs Helen Howe Start date: 10/9/2023 Review date: 9/12/2023 Plan number: 1

SEN needs:

- Attention Deficit (Hyperactivity) Disorder (SEMH)

Gifted & talented: N First language: English Free school meals: Y
 Ethnic background: Pupil Premium: Y EAL: N Armed forces: N
 Attendance: 89.2%



About Me:

My Strengths:

I am good at gymnastics
 I am good at dance

Who/What is important to me:

Mum
 Family
 Friendships
 Dance

My Support:

I would like you to know that:

I have a diagnosis of ADHD

This means that:

I can be impulsive and hyperactive
 I may fidget in class

Student SEN Information

Cognition & Learning

Barriers to Learning:	How best to support me:
I find it difficult to concentrate for long periods of time.	Please chunk work for me and allow me to use my managed move card.
I have difficulty processing large amounts of information and will get easily overwhelmed.	Please give me simple verbal directions and use a task management board with me where possible.

Communication & Interaction

Barriers to Learning:	How best to support me:
I am very impulsive and am prone to shouting out	Please try and give me different opportunities to have my voice heard. Allow me to write answers down and avoid overly reprimanding me where possible.
I sometimes have difficulties with my friendships and this will have a negative impact on my day.	Please help me to resolve any difficulties and scaffold any such conversations with my peers.

PUPIL PROFILE

Pupil Passport - Greenbank High School

Teacher: Mrs Marcia Smith



Date of birth: 12/10/2011
Year group: Year 7
Tutor group: 7P
House: Pankhurst

Things that I would like you to know

- I look forward to drama and art
- I have a 5 minute early pass and time out/managed move card
- I can shout out when I think of something through enthusiasm
- even though I can be loud I can become overwhelmed in noisy environments
- I am frustrated when I forget things
- I am very forgetful and lose things all of the time

Things that are important to me

- My friendships with people
- My dance class and group

Things that I struggle with

- I take things literally, you need to be very clear with instructions to me.
- I could come across as being rude and I don't mean to be
- Maths can be tricky for me and Computer Science
- I can get stressed getting changed for PE
- I can forget homework/ books and this worries me
- I am struggling with reading
- I cannot remember what lessons I have and always have to check before
- Punctuality is an issue - I am always late

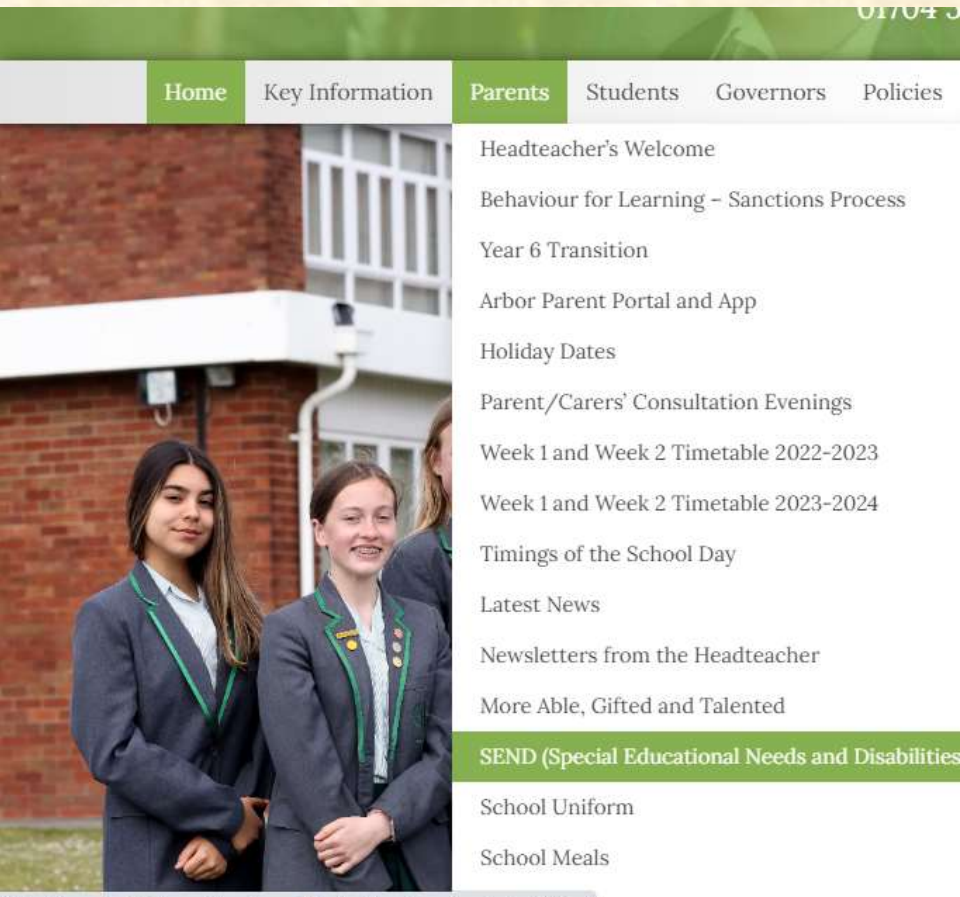
My Achievements from last year/term

- I did a big dance show and sang a solo on the stage with my dance group
- Beginning to settle into high school

Access arrangements

- 25% Extra Time
- Rest Breaks

Where to find additional SEND Information



In the **Parent** tab on our school website, you will find the **SEND** page. On this page you can find the following information:

- Contact details
- SEND Information report.
- SEND and Disability Report
- Link to the Local Offer
- ASD Offers
- SEND Newsletter
- Sefton Course details.



PUPIL PROFILE

Pupil Passport - Greenbank High School

Teacher: Mrs Marcia Smith



Date of birth: 12/10/2011
Year group: Year 7
Tutor group: 7P
House: Pankhurst

Things that I would like you to know

- I look forward to drama and art
- I have a 5 minute early pass and time out/managed move card
- I can shout out when I think of something through enthusiasm
- even though I can be loud I can become overwhelmed in noisy environments
- I am frustrated when I forget things
- I am very forgetful and lose things all of the time

Things that are important to me

- My friendships with people
- My dance class and group

Things that I struggle with

- I take things literally , you need to be very clear with instructions to me.
- I could come across as being rude and I don't mean to be
- Maths can be tricky for me and Computer Science
- I can get stressed getting changed for PE
- I can forget homework/ books and this worries me
- I am struggling with reading
- I cannot remember what lessons I have and always have to check before
- Punctuality is an issue - I am always late

My Achievements from last year/term

- I did a big dance show and sang a solo on the stage with my dance group
- Beginning to settle into high school

Access arrangements

- 25% Extra Time
- Rest Breaks

SEND INFORMATION FOR STAFF

The screenshot shows the top of a website with a navigation bar containing 'New', 'Page details', and 'Analytics'. The main heading is 'Welcome to SEND' with the GHS logo. Below this, it says 'Welcome to the SEND Department! Please use the links below to access resources, support and guidance.' There is a 'SEND TEAM' banner with photos of staff members. At the bottom, contact information is provided: 'If there is anything we can help with, please email the team: Helen: howe_h.st@greenbankhigh.co.uk, Kate: campbell_k.te@greenbankhigh.co.uk, Karen: low_k.te@greenbankhigh.co.uk, TA Team: GHSTA@greenbankhigh.co.uk'.

Key Documents

ADHD Referral Form	ASD Referral Form	Year 7 Inclusion Reg	EduKey	SEND Briefings
EHCP Pupils	SEND CPD	SEND Referral Form	ACER Centre	Year 7 REG
Year 9 REG	Year 10 REG	Year 11 REG		

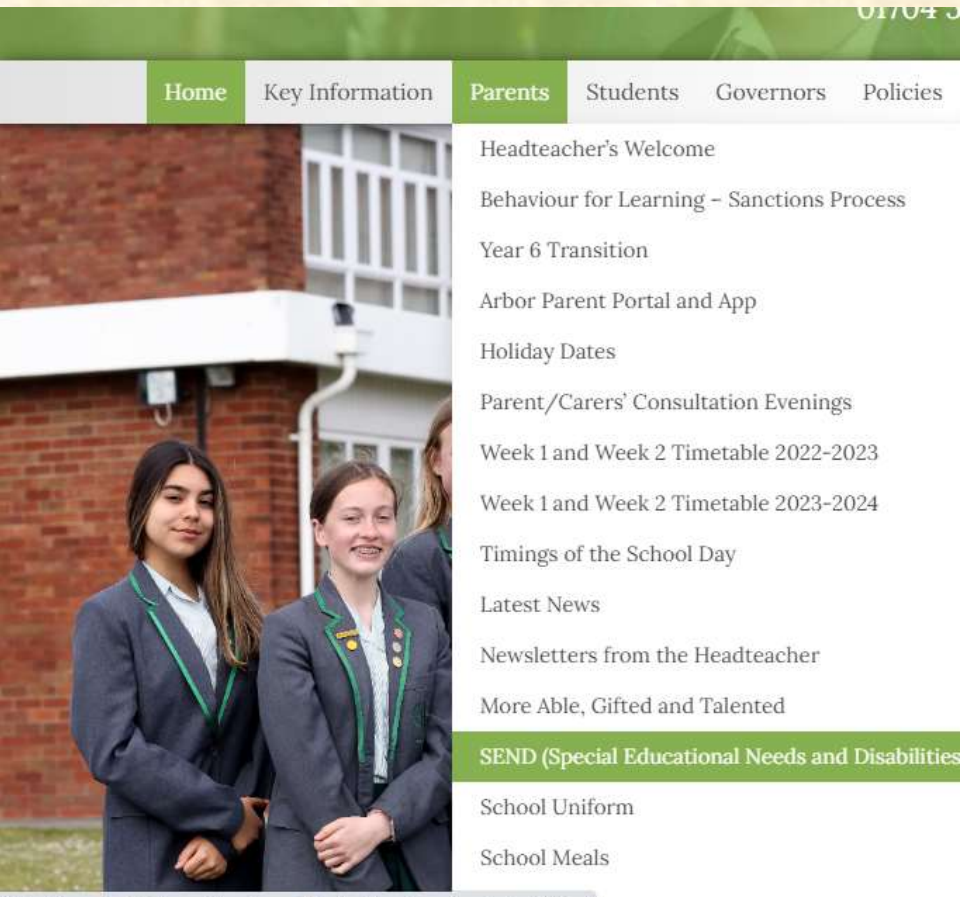
Autism Initiatives Training Links:

Autism and the science	Sensory Needs
Autism & PDA	Social Stories
Classroom Strategies	

T&L Resources

T&L Strategies	Inclusive Classroom	Subject Strategies	Coloured Paper List
----------------	---------------------	--------------------	---------------------

Where to find additional SEND Information



In the **Parent** tab on our school website, you will find the **SEND** page. On this page you can find the following information:

- Contact details
- SEND Information report.
- SEND and Disability Report
- Link to the Local Offer
- ASD Offers
- SEND Newsletter
- Sefton Course details.

